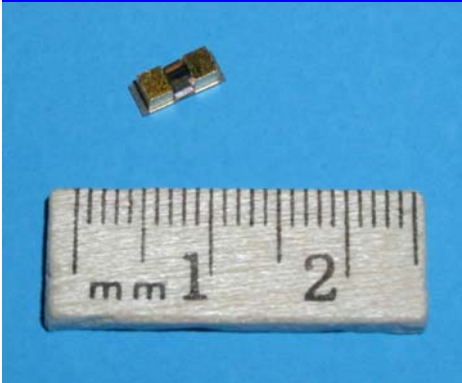


# Flatpak Mini Optical Isolator



## DESCRIPTION

The Flatpak "Mini" series of optical isolators offers outstanding performance in an extremely compact design. The new Flatpak packaging provides the same features and performance as our standard Mini Isolators. It also allows for surface mounting and use in automated material handling and processing methods. Available in several sizes and configurations to meet most isolation needs.

## APPLICATIONS

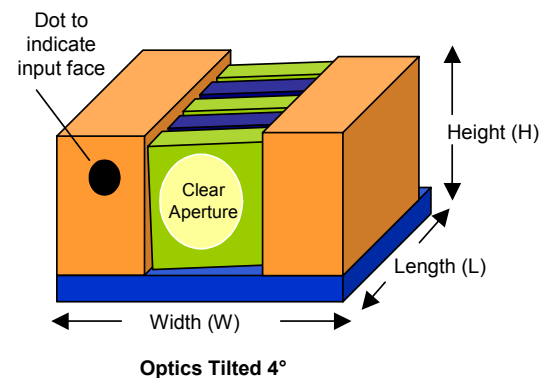
-Semiconductor Laser Modules  
-Tunable Laser Modules

-Automated Pick and Place Assembly  
-Small Form Factor Laser Modules

## FEATURES

- Low Insertion Loss
- High Isolation
- Available as Single Stage, Semi-Double Stage or Full Double Stage
- Available in Clear Path Epoxy or Soldered Packaging
- Polarization Can be Determined by Customer

## SAMPLE DIAGRAM



<u>SPECIFICATIONS</u>	Single Stage				Semi-Double Stage			
Center Wavelength *	1310nm	1480nm	1550nm	1590nm	1310nm	1480nm	1550nm	1590nm
Clear Aperture	0.6mm - 1.6mm				0.6mm - 1.6mm			
Physical Dimensions (W,L,H)	W: 3mm & up, L: 1.6mm & up, H: 2mm & up				W: 3mm & up, L: 2mm & up, H: 2mm & up			
Peak Isolation (typical)	≥ 38dB				≥ 55dB			
Insertion Loss (typical)	≤ 0.25dB				≤ 0.5dB			
Operating Temperature Range	0°C - 55°C							
Storage Temperature Range	-40°C - 85°C							
Maximum Power Density	100W/cm <sup>2</sup>							
Polarization Input/Output	Can Be User Specified							
* other wavelengths available upon request								

9/02

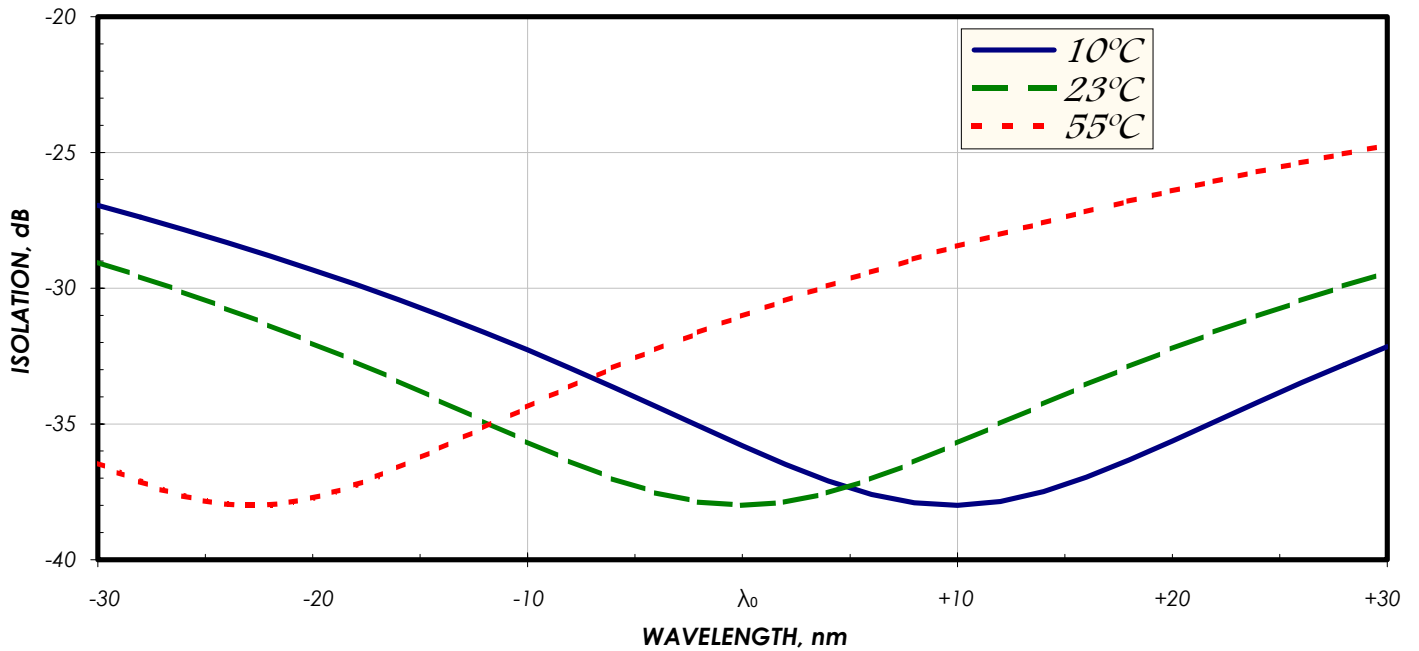


www.isowave.com  
info@isowave.com

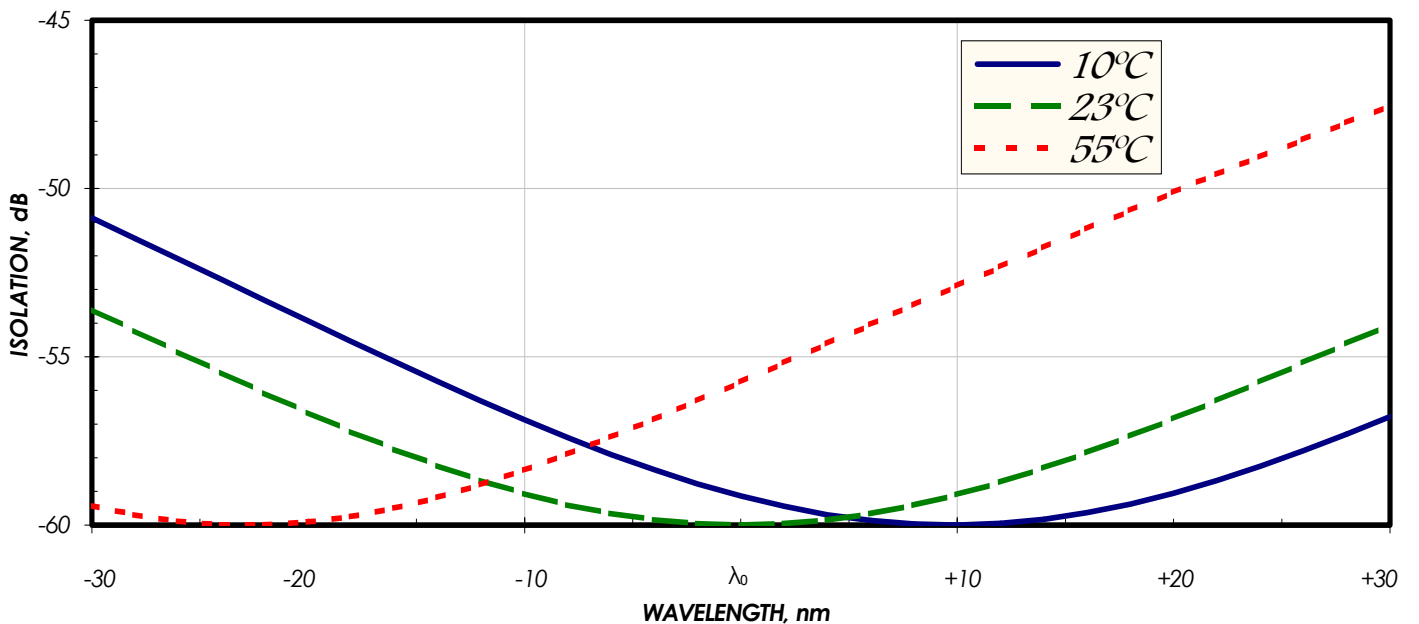
**ISOWAVE**  
64 Harding Avenue  
Dover, New Jersey 07801  
Tel 973-328-7000  
Fax 973-328-7036

# Flatpak Mini Optical Isolator

TYPICAL ISOLATION CURVES FOR SINGLE STAGE ISOLATOR



TYPICAL ISOLATION CURVES FOR SEMI-DOUBLE ISOLATOR



ISOWAVE



www.isowave.com  
info@isowave.com

ISOWAVE

64 Harding Avenue  
Dover, New Jersey 07801  
Tel 973-328-7000  
Fax 973-328-7036